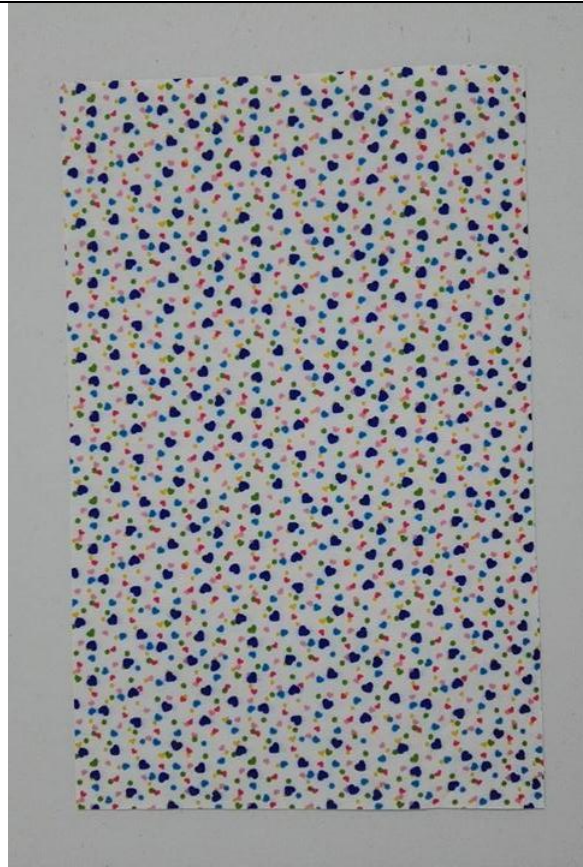


ASSEMBLE SLIP POCKET

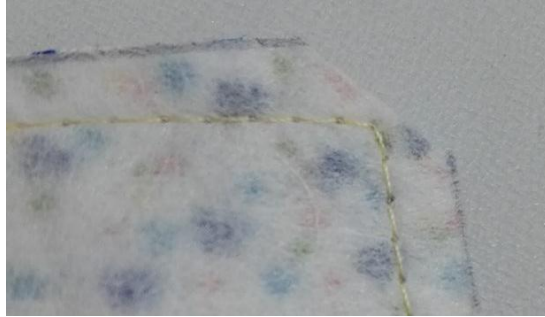
OPTION 1:

-Cut a piece of
25cm H x 16 cm W
(10" H X 6,5" W).

-Fold the pocket in
half, right sides
together and sew
around the open
edges, leaving a
gap for turning.



-Cut the corners diagonally before turning the pocket.



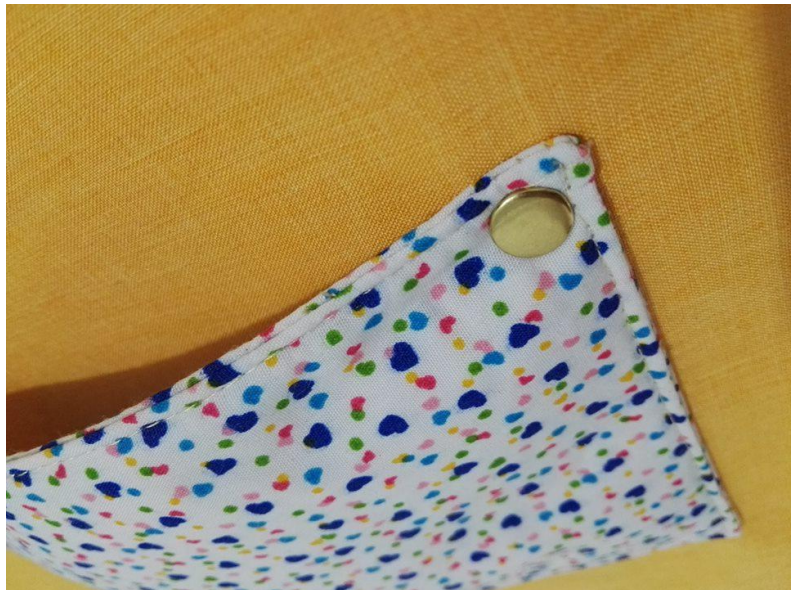
-Now turn the pocket, push out the corners neatly, making sure the edges are neatly turned in at the gap. Pins or clips the gap, then sew (0.3mm -1/8" seam allowance).



- Pin the pocket in place where you want it on your lining or in the place indicated on the pattern, if applicable, and stitch carefully on the sides and bottom. Make sure it's straight.



- Optionally, you can add rivets in the corners to ensure the final stitches.



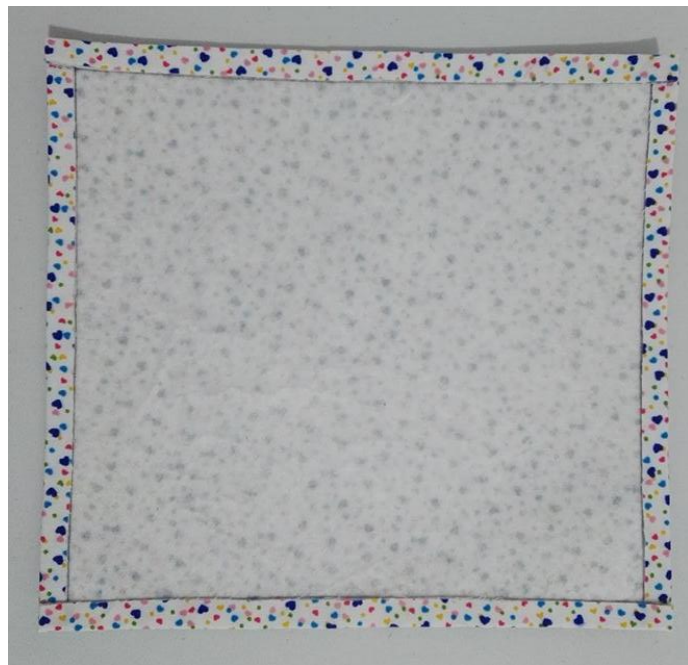
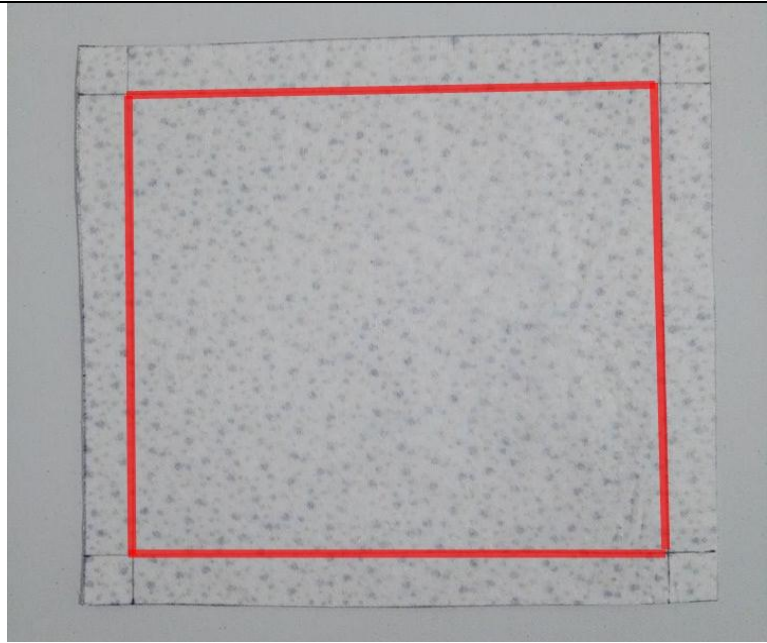
OPTION 2:

- Take a piece of 24cm H X 25cm W. (9- 1/2 "H x 10" W). Draw a margin of 3/4 "(2cm) on all 4 sides.

- Fold each edge to marked line.
NOTE: Edges are folded to the line, not at the line.

-Take a contrast strip (Vinyl) of 2 cm H x 23 cm W (3/4 "H x 9 -1/4" W) and fold in half. (Match the long edges).

If your contrast strip is Woven, the strip must have double H (4cm or 1- 1/2 ") Fold both long edges so they meet in the center. Fold in half again.



-Place the strip on the top edge, leaving part of it protruding.



- Fold the pocket piece upwards to match the edges. (Leaving the part of the protruding strip outside). Then sew (0.3mm -1/8" seam allowance).



- Pin the pocket in place where you want it on your lining or in the place indicated on the pattern, if applicable, and stitch carefully on the sides and bottom. Make sure it's straight. Sew a row of stitches in the center to make a split. - Optionally, you can add rivets in the corners to ensure the final stitches.

